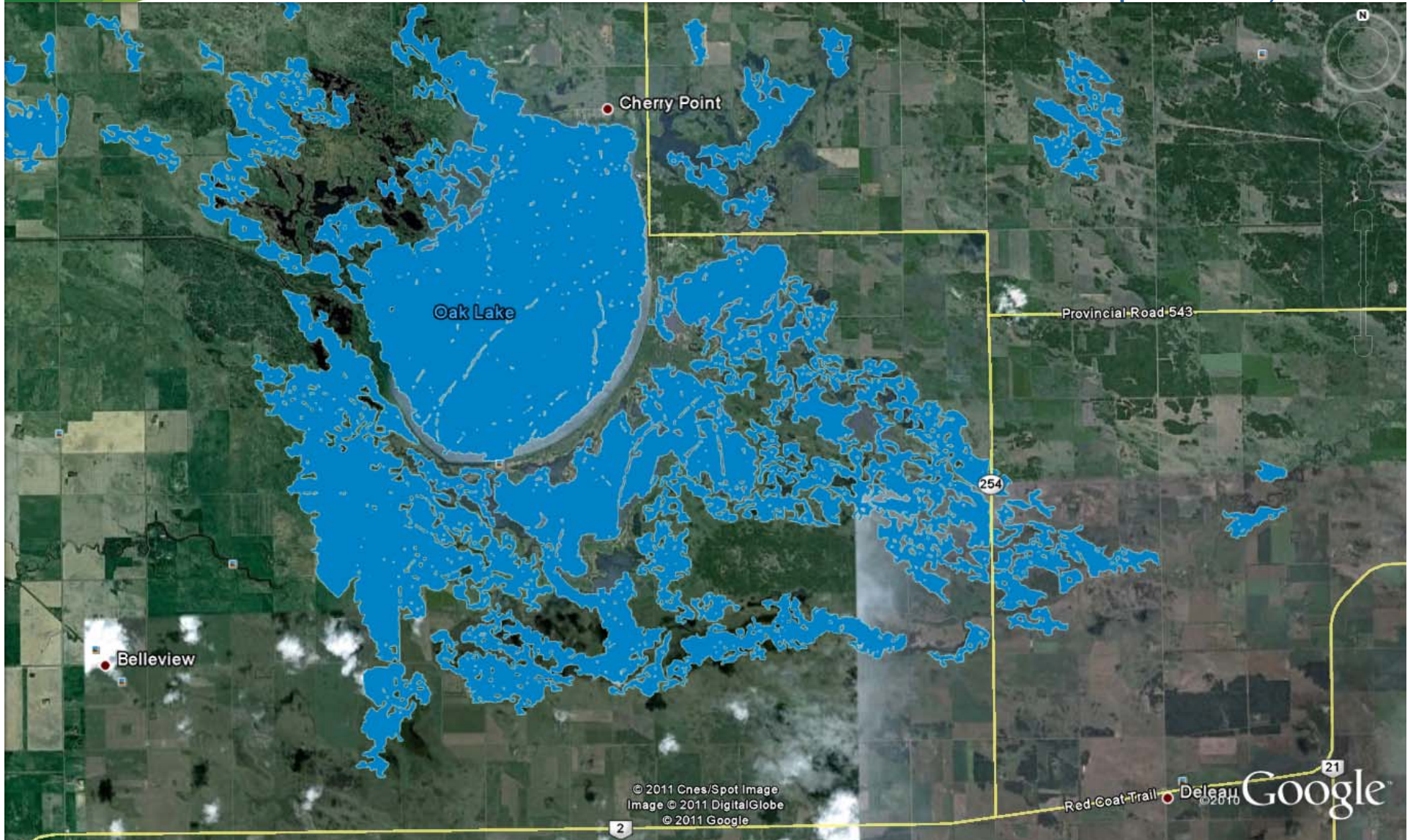


The flood extent products are derived from RADARSAT-1 and/or RADARSAT-2 images with a system developed and operated by the Earth Sciences Sector of Natural Resources Canada.

Preliminary results – for review only

Flood extents around Oak Lake and Plum Lake (24. April 2011) →



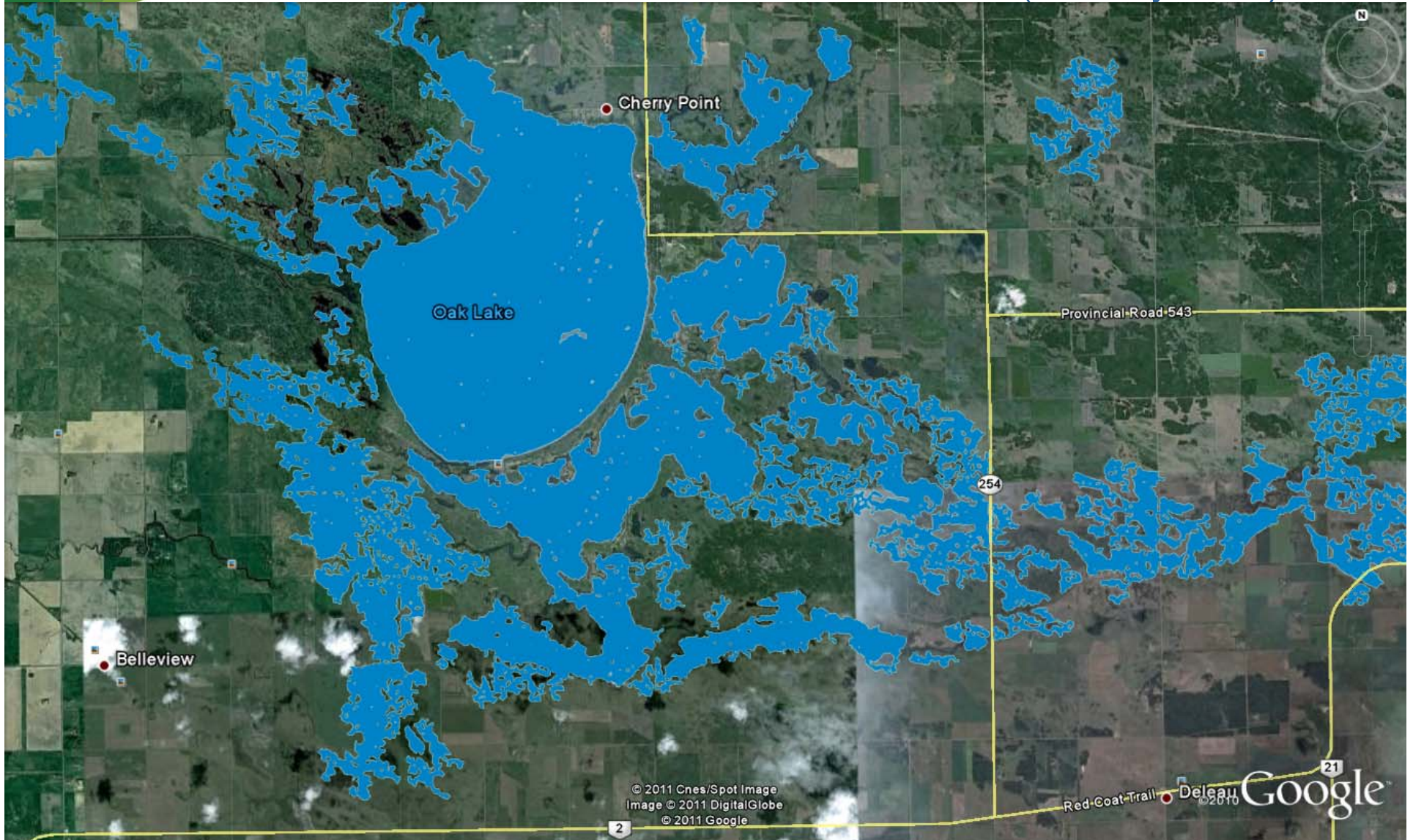
prepared by Karl-Erich Lindenschmidt

Manitoba 

The flood extent products are derived from RADARSAT-1 and/or RADARSAT-2 images with a system developed and operated by the Earth Sciences Sector of Natural Resources Canada.

Preliminary results – for review only

Flood extents around Oak Lake and Plum Lake (04. May 2011) →



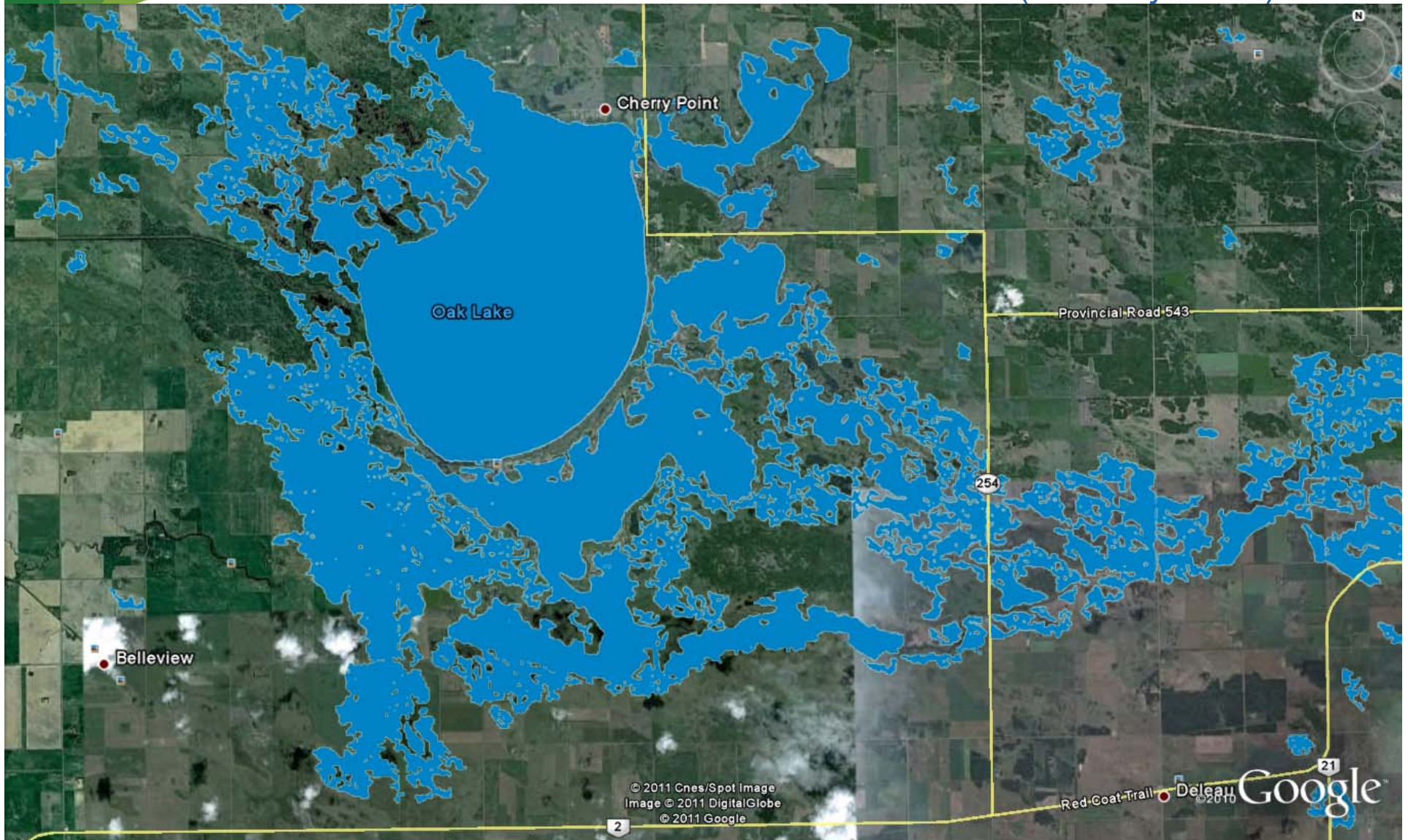
prepared by Karl-Erich Lindenschmidt

Manitoba 

The flood extent products are derived from RADARSAT-1 and/or RADARSAT-2 images with a system developed and operated by the Earth Sciences Sector of Natural Resources Canada.

Preliminary results – for review only

Flood extents around Oak Lake and Plum Lake (08. May 2011) →



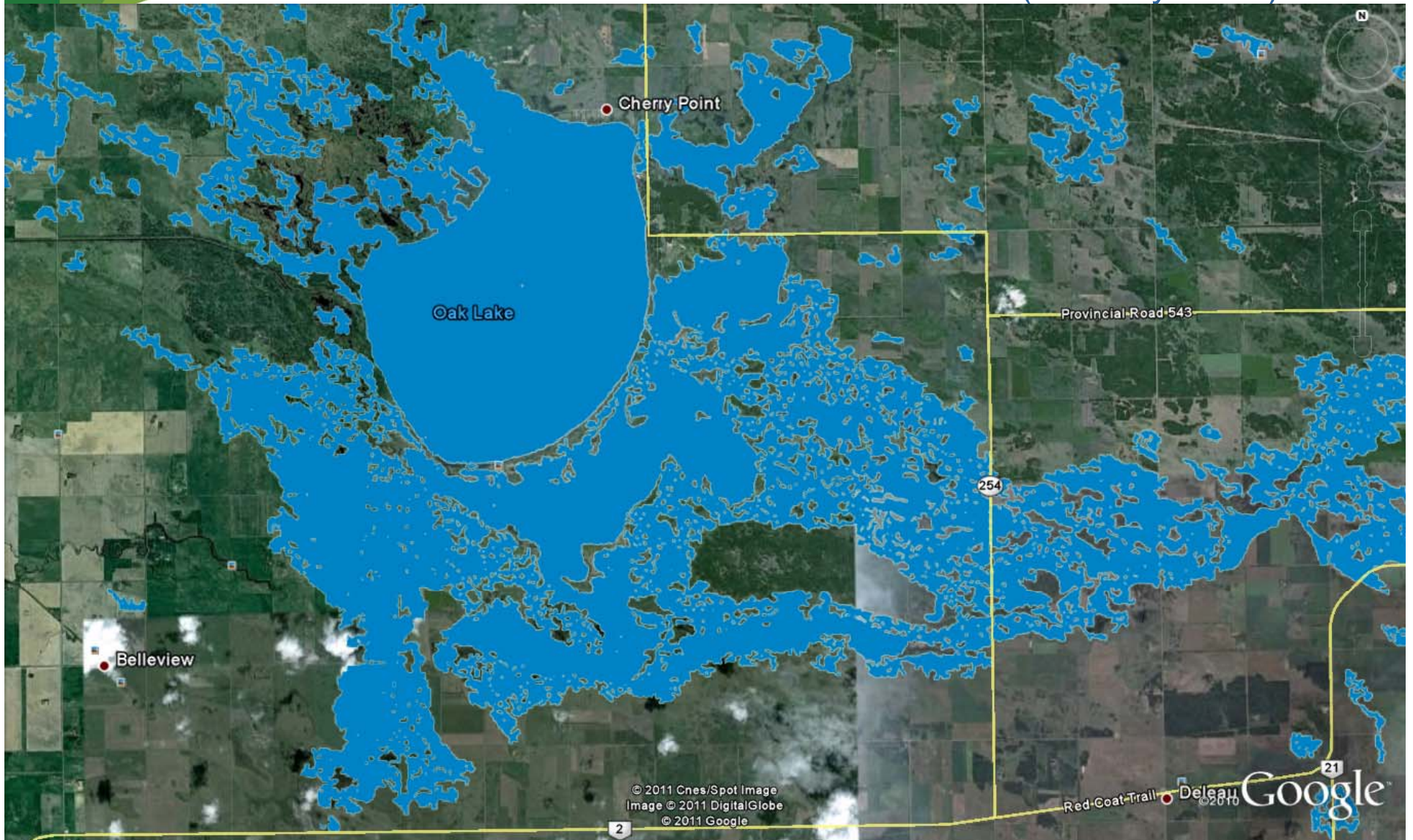
prepared by Karl-Erich Lindenschmidt



The flood extent products are derived from RADARSAT-1 and/or RADARSAT-2 images with a system developed and operated by the Earth Sciences Sector of Natural Resources Canada.

Preliminary results – for review only

Flood extents around Oak Lake and Plum Lake (11. May 2011) →



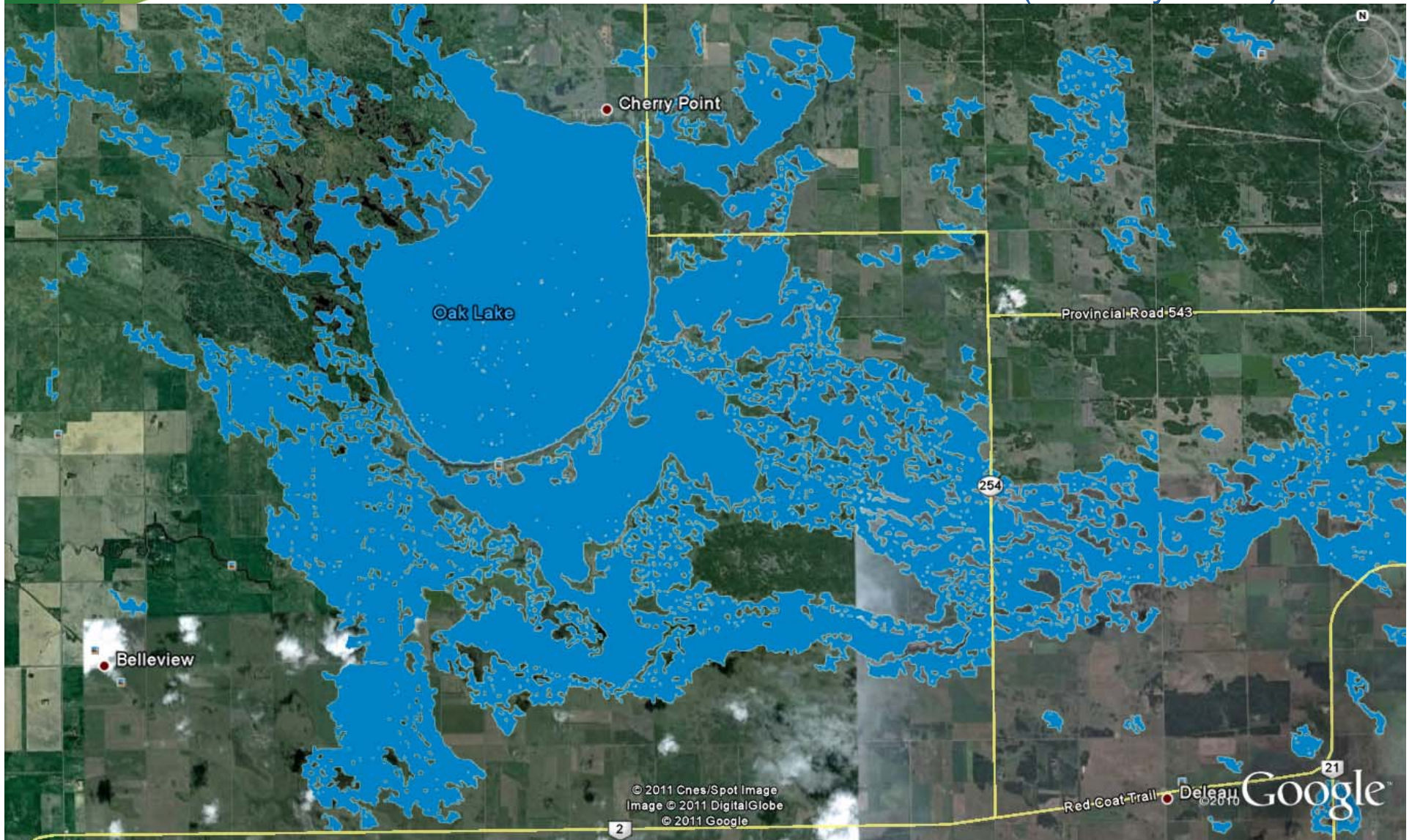
prepared by Karl-Erich Lindenschmidt

Manitoba 

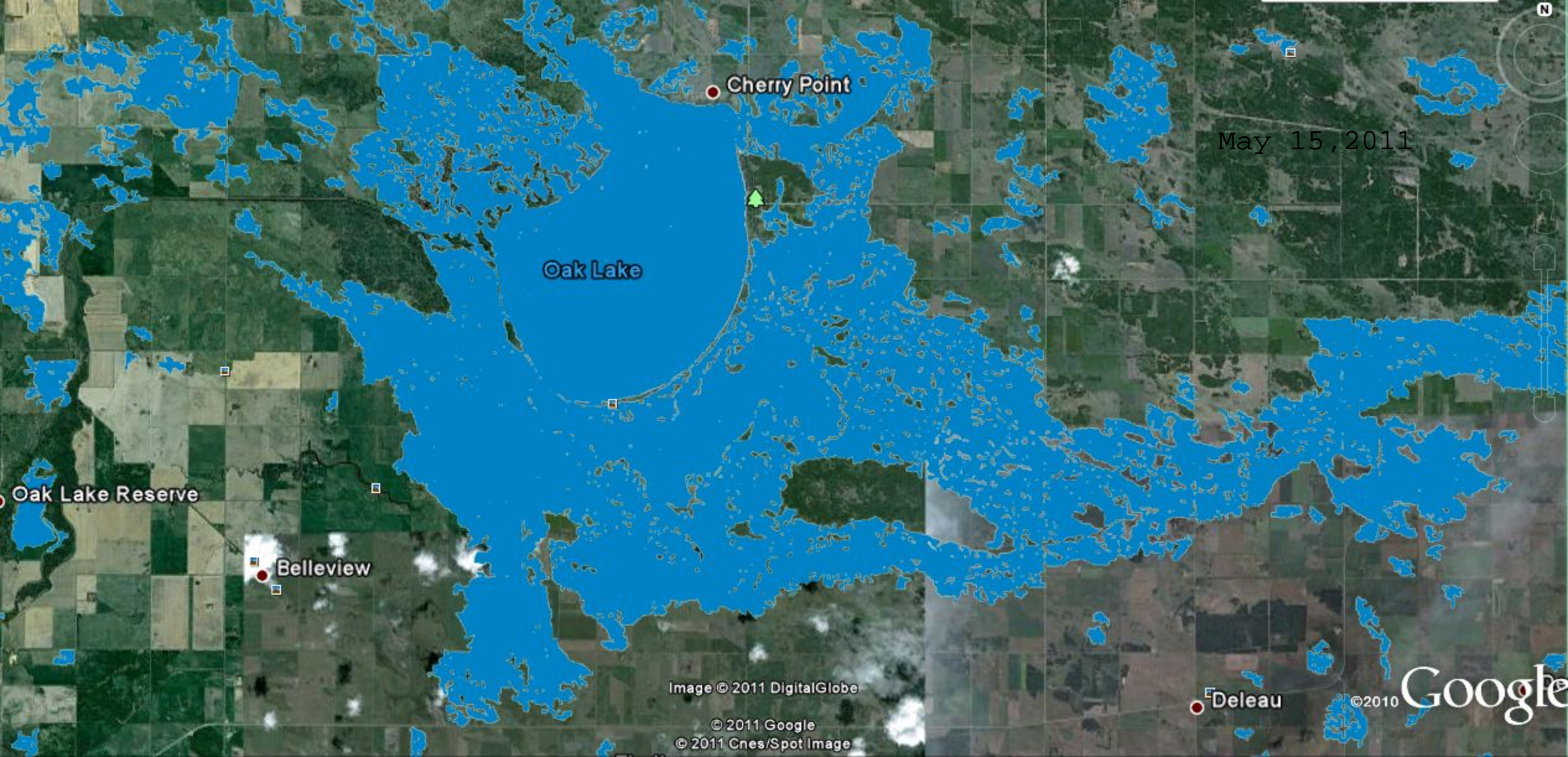
The flood extent products are derived from RADARSAT-1 and/or RADARSAT-2 images with a system developed and operated by the Earth Sciences Sector of Natural Resources Canada.

Preliminary results – for review only

Flood extents around Oak Lake and Plum Lake (13. May 2011) →



prepared by Karl-Erich Lindenschmidt



Cherry Point

May 15, 2011

Oak Lake

Oak Lake Reserve

Belleview

Deleau

Google

Image © 2011 DigitalGlobe

© 2011 Google
© 2011 Cnes/Spot Image

©2010